

Ref. RGIPT/JAIS/IWD/QE/2022-23/25

Date: 03.02.2023

To,

M/s [Name of Vendor/Contractor]

Address [Complete Address of Vendor/Contractor]

Email-

Contact No.....

GSTIN:

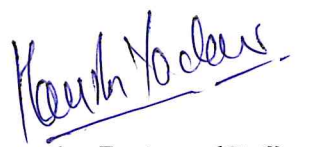
Sub: Quotation enquiry for Aluminum Partition Work in the office of Dean, Student's Affairs and Institute Works Department at RGIPT, Jais Campus.

Dear Sir,

We request you to submit your competitive rates (quotation) for Aluminum Partition Work in the office of Dean, Student's Affairs and Institute Works Department at RGIPT Jais Campus, as per the attached BOQ as **Annexure - 1.**

Terms & Conditions:

- The rate & amount should be on FOR basis.
- Quoted rate should be inclusive of **GST & Freight charges.**
- Quoted rate shall be valid for period of 2 months from the date of opening of quotation.
- The work should be carried out as per enclosed (BOQ).
- List of preferred makes of materials approved by the Engineer-in-Charge is attached as **Annexure -2.**
- The quotation should be sent to us duly **Signed and Stamped** only in **Sealed Envelope** and Super scribed as **Ref. No.: RGIPT/JAIS/IWD/QE/2022-23/25, Quotation for Aluminum Partition Work in the office of Dean, Student's Affairs and Institute Works Department at RGIPT Jais** by registered post or by hand to the office of The Chairman, Institute Works Department, RGIPT Jais, Amethi - 2299304 (U.P.).
- The quotation should be submitted within 7 days from the date of quotation enquiry i.e., the quotation should be received on or before 09.02.2023 by 04:00 PM. Quotation received after the due date, for whatever reason, will not be considered for evaluation.
- The order will be awarded to the vendor, whose rate will be lowest in grand total.
- The Institute reserves the right to accept/reject all or any part of the offer without assigning any reason thereof.
- Your sealed quotation should be addressed to: **The Chairman, Institute Works Department, Rajiv Gandhi Institute of Petroleum Technology Jais, Mukhetiya More, Harbanshganj, Tiloi, Amethi, UP - 229304.**


Executive Engineer (Civil)

Page 1 of 9

Annexure - I(a)

Rajiv Gandhi Institute of Petroleum Technology, Jais, Amethi
Bill of Quantity (BOQ) for Aluminium Partition Work in IWD Office & DoSA Office

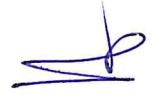
| S. No. | Description | Unit | Quantity | Rate (Rs.) | Total Amount (Rs.) |
|--------|--|-------|----------|------------|--------------------|
| | Partly Glazed Partly Pre-laminated Particle Board Aluminium Partitions works | | | | |
| 1 | Providing and fixing 1500 mm height partly particle board, partly glazed aluminium partition with following specifications (Measurement shall be taken up to finished partition level & not of frame work and aluminium member shall go up to slab/beam soffit) | sqft. | 415.98 | | |
| a | Providing and fixing aluminium work for doors, windows, ventilators and partitions with extruded built up standard tubular sections/ appropriate Z sections and other sections of approved make conforming to IS: 733 and IS: 1285, fixing with dash fasteners of required dia and size, including necessary filling up the gaps at junctions, i.e. at top, bottom and sides with required EPDM rubber/ neoprene gasket etc. Aluminium sections shall be smooth, rust free, straight, mitred and jointed mechanically wherever required including cleat angle, Aluminium snap beading for glazing / paneling, C.P. brass / stainless steel screws, all complete as per architectural drawings and the directions of Engineer-in-charge. (Glazing, paneling and dash fasteners to be paid for separately) : For fixed portion Powder coated aluminium (minimum thickness of powder coating 50 micron) | | | | |
| b | Providing and fixing 12 mm thick pre-laminated particle board flat pressed three layer or graded wood particle board conforming to IS: 12823 Grade I Type II, in paneling fixed in aluminium doors, windows shutters and partition frames with C.P. brass / stainless steel screws etc. complete as per architectural drawings and directions of engineer-in-charge. Pre-laminated particle board with decorative lamination on both sides | | | | |
| c | Providing and fixing glazing in aluminium door, window, ventilator shutters and partitions etc. with EPDM rubber / neoprene gasket etc. complete as per the architectural drawings and the directions of engineer-in-charge . (Cost of aluminium snap beading shall be paid in basic item): With float glass panes of 5 mm thickness (weight not less than 12.50 kg/sqm) | | | | |
| d | Providing and fixing frosted film over 5 mm thick float glass complete as per direction of Engineer-in-Charge | | | | |

Page 2 of 9

Rajiv Gandhi Institute of Petroleum Technology, Jais, Amethi
Bill of Quantity (BOQ) for Aluminium Partition Work in IWD Office & DoSA Office

| S. No. | Description | Unit | Quantity | Rate (Rs.) | Total Amount (Rs.) |
|--------|--|------|----------|------------|--------------------|
| | Partly Glazed Partly Pre-laminated Particle Board Aluminium Partitions works | | | | |
| e | <p>Providing & fixing false ceiling at all height including providing & fixing of framework made of special section, power pressed from M.S. sheets and galvanised with zinc coating of 120 gms/ sqm (both side inclusive) as per IS : 277 and consisting of angle cleat of size 25mm wide x 1.6mm thick with flanges of 27mm and 37mm, at 1200mm c/c, one flange fixed to the ceiling with dash fastener 12.5mm dia x 50mm long with 6mm dia bolts, other flange of cleat fixed to the angle hangers of 25 x10 x0.50mm of required length with nuts & bolts of required size and other end of angle hanger fixed with intermediate G.I channels 45 x15 x 0.90mm running at the spacing of 1200 mm c/c, to which the ceiling section 0.5mm thick bottom wedge of 80mm with tapered flanges of 26 mm each having lips of 10.5mm, at 450mm c/c, shall be fixed in a direction perpendicular to G.I intermediate channel with connecting clip made out of 2.64mm dia x 230mm long G.I wire at every junction, including fixing perimeter channels 0.50mm thick 27mm high having flanges of 20mm and 30mm long, the perimeter of ceiling fixed to wall/ partitions with the help of Rawl plugs at 450mm centre, with 25mm long dry wall screws @ 230mm interval, including fixing of Calcium Silicate Board to ceiling section and perimeter channels with the help of dry wall screws of size 3.5 x25mm at 230mm c/c, including jointing & finishing to a flush finish of tapered and square edges of the board with recommended jointing compounds, jointing tapes, finishing with jointing compounds in three layers covering up to 150mm on both sides of joints and two coats of primer suitable for boards, all as per manufacturer's specification and also including the cost of making opening for light fittings, grills, diffusers, cut outs made with frame of perimeter channels suitably fixed, all complete as per drawings, specification and direction of the Engineer in charge but excluding the cost of painting with:</p> <p>10 mm thick Calcium Silicate Board made with Calcareous & Siliceous materials reinforced with cellulose fiber manufactured through autoclaving process. Approx. Qty. = 54.00 sqft.</p> | - | - | - | - |
| 2 | GST @ 18% | | | | |
| | Total Amount inclusive of GST (S. No. 1 + S. No. 2) | | | | |

Page 3 of 9

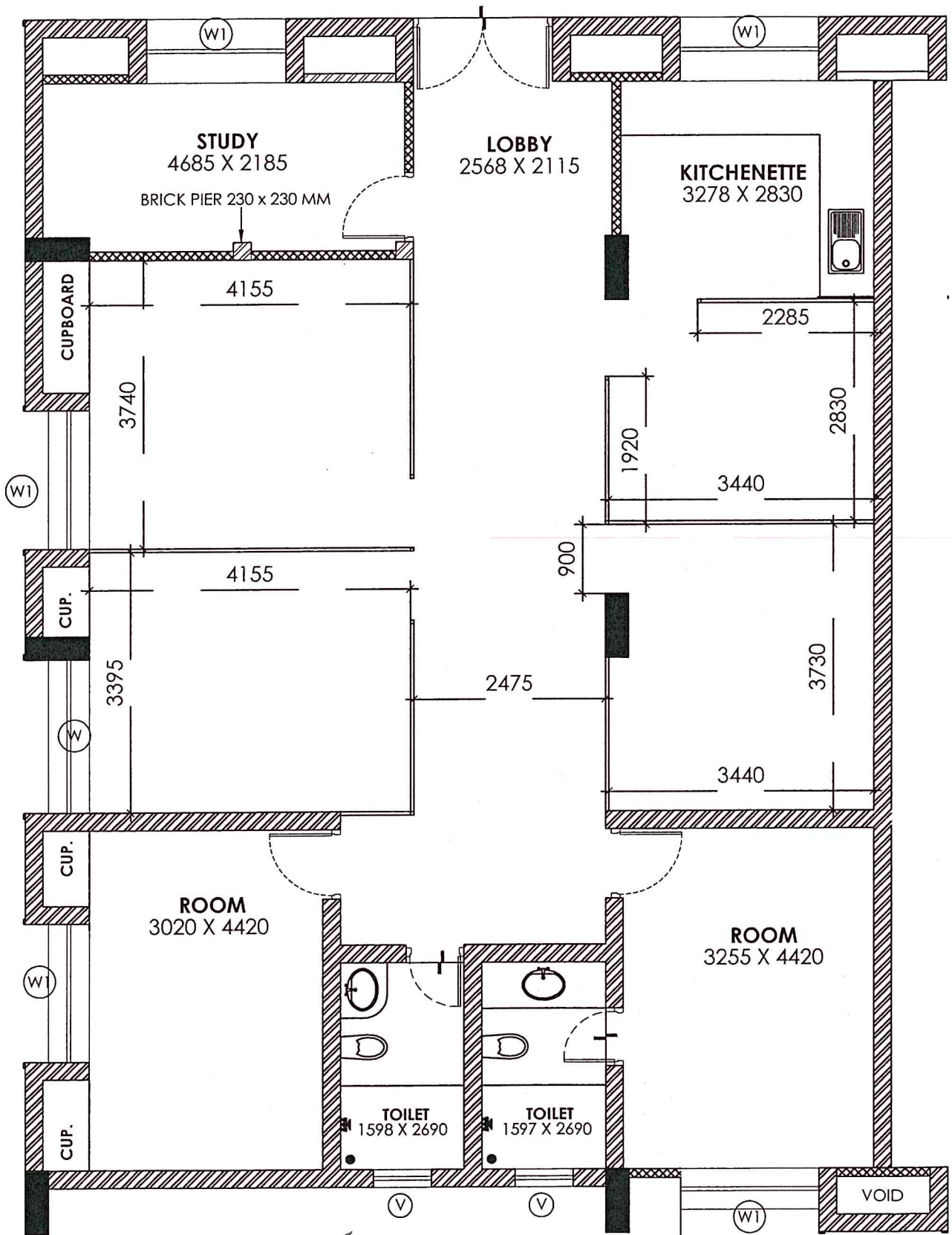


LIST OF PREFERRED MAKES

| SL.NO. | MATERIALS | MANUFACTURER/BRAND/MAKE |
|--------|-----------------------------|---|
| 1 | ALUMINIUM SECTION | HINDALCO, JINDAL & INDIAN ALUMINIUM CO. |
| 2 | PRELAMINATED PARTICLE BOARD | GOOD QUALITY |
| 3 | CLEAR GLASS | SAINT GOBAIN, MODIGUARD, AIS |
| 4 | CALCIUM SILICATE BOARD | HILUX (RAMCO), PROMAT |

Page 4 of 9

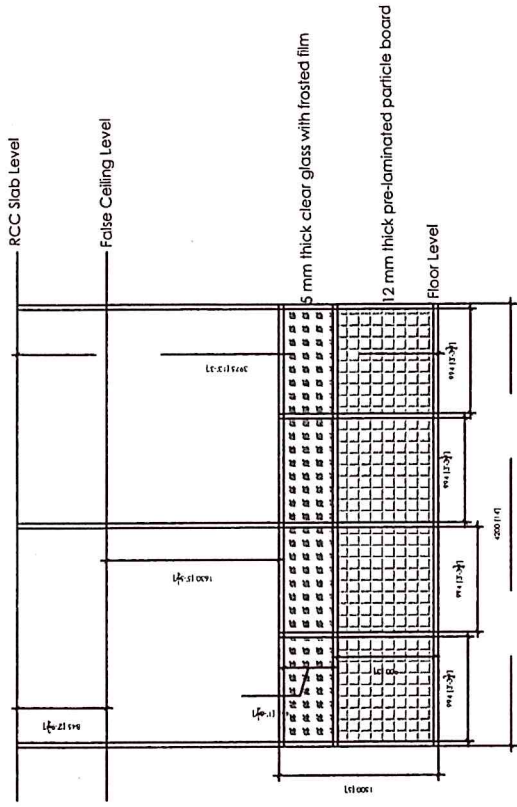




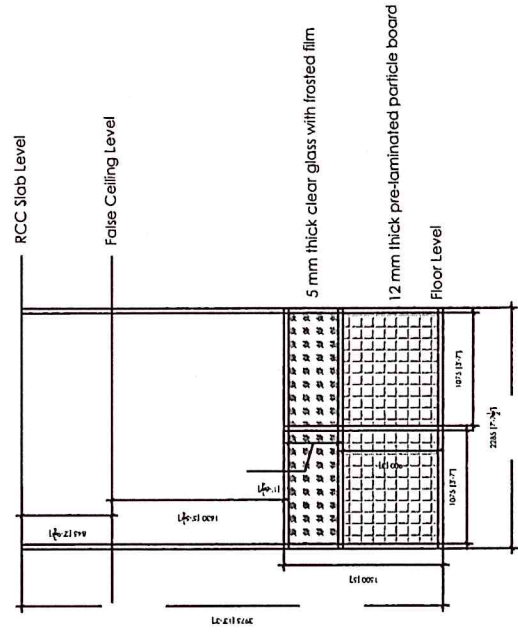
Handwritten mark

Handwritten mark

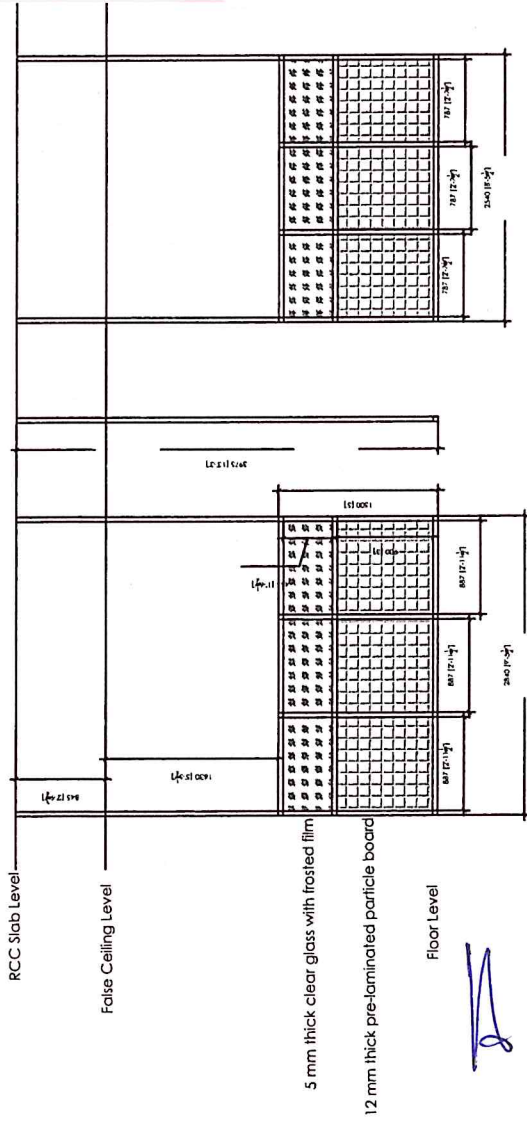
IWD Office



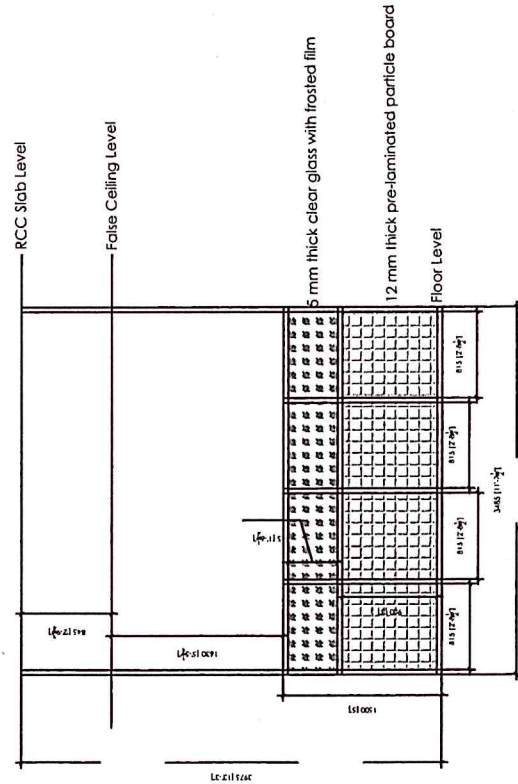
Elevation of Aluminium Partition work



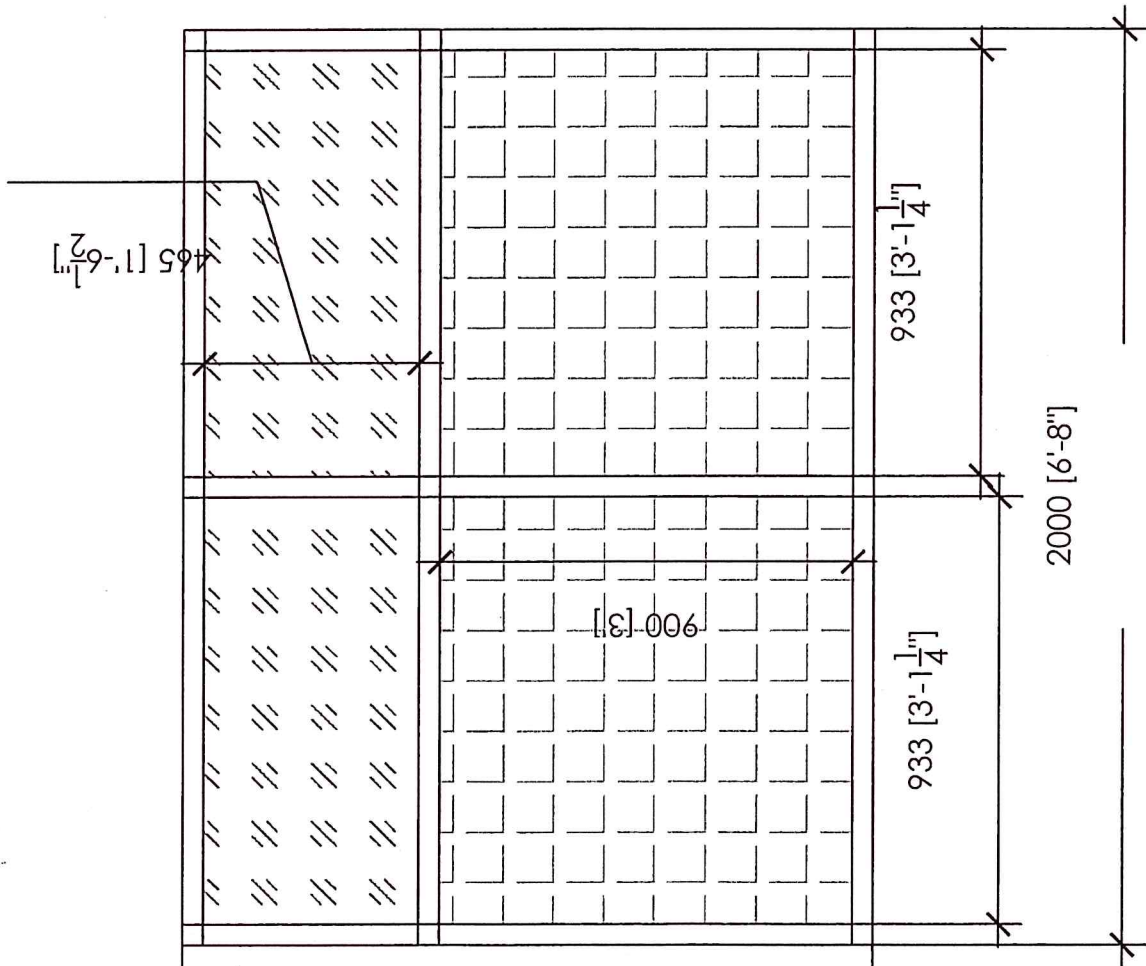
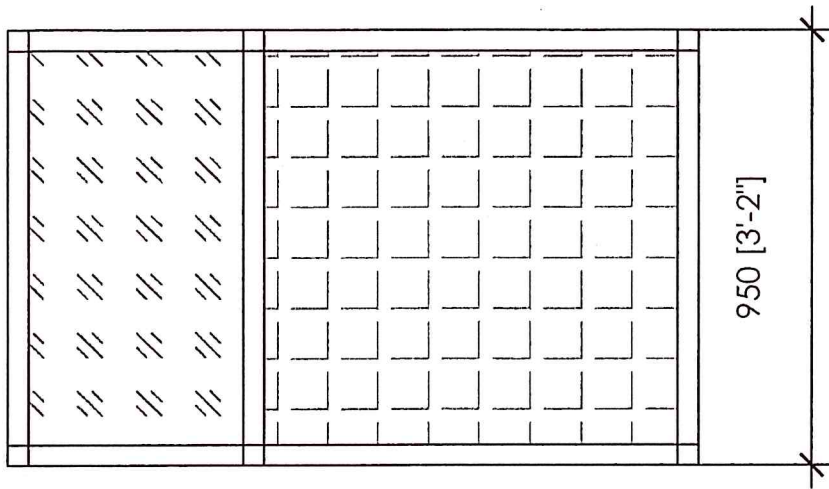
Elevation of Aluminium Partition work



Elevation of Aluminium Partition work



Elevation of Aluminium Partition work

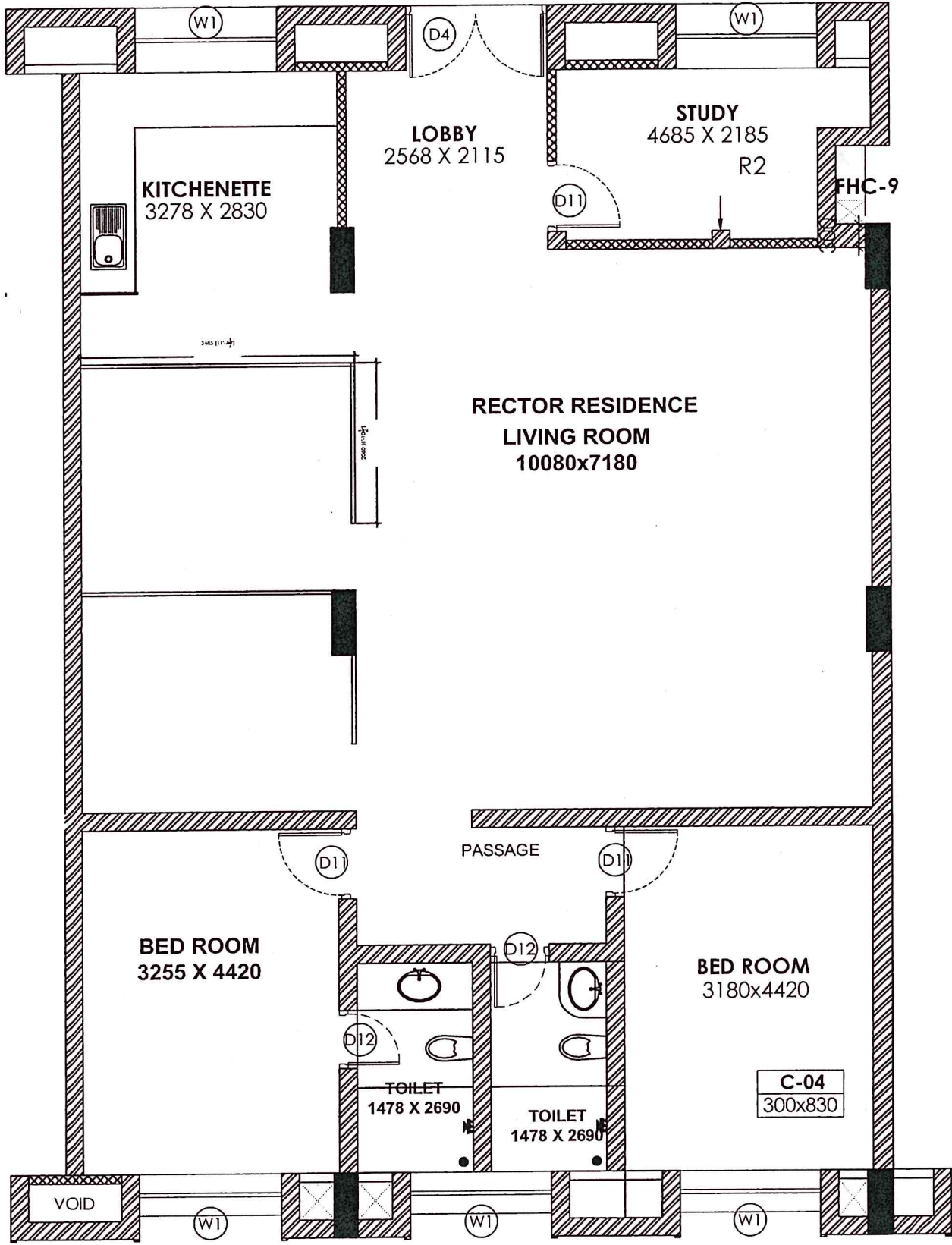


Handwritten mark

1500 [5']

Page 7 of 9
 1500 [5']
 1500 [5']
 1500 [5']

Handwritten signature



A

B

DASA Office

